

The background of the entire page is a painting of a landscape. It features a rolling green hill in the middle ground, topped with a few trees. In the foreground, a herd of animals, possibly horses or cattle, is grazing in a grassy field. The sky is filled with large, billowing white clouds against a blue background. The overall style is impressionistic, with visible brushstrokes and a focus on light and color.

MYSTIC  
MUSEUM  
OF  
ART

THE CLEARING  
2017 ANNUAL REPORT



# MYSTIC MUSEUM OF ART 2017 ANNUAL REPORT

## THE CLEARING

### CONTENTS

From the Chairperson and President 2

Exhibitions & Collections 5

Education 6

Treasurer's Report 8

Financials 9

Supporting Organizations & Individuals 15

MMoA Committees 17

Elected Artist Membership 19

Board of Directors and Staff 20

Image Credits 20

Mission Statement 21

## FROM THE CHAIRPERSON AND PRESIDENT

The year 2017 was one of great introspection and focus as the Board continued to oversee implementation of the previously adopted three-year strategic plan.

Dear MMoA Members and Supporters,

It is with great excitement and passion for the future of Mystic Museum of Art that we write this letter and submit this report to you. The year 2017 was one of great introspection and focus as the Board continued to oversee implementation of the previously adopted three-year strategic plan. Some important key elements of the plan served as our guideposts as the Museum moved forward in 2017: connect with audiences through the experience of visual art, enhance our traditional exhibition program with curated and scholarly exhibitions in collaboration with other museums, exhibit and build our permanent collection, support and acknowledge the creative work of our artists, develop a master plan for our facilities, promote continuing excellence in our organization, define the future community that will support us, and work to ensure a sustainable financial future.

Charles Davis would be proud to see how the art colony he founded as well as the Mystic Art Association in 1913, known for fostering the appreciation of our early artists, has grown into the Mystic Museum of Art, serving so many as an arts and culture hub for our extended community. The strengthening of our permanent collection allows us to continue the legacy of our early artists and tell our important story. In 2017, we received one of Charles Davis's important works, *The Clearing*, through a bequest from the late Margaret Howe Kitchings. We now have two Davises in the collection; the other being titled *Summer*. In addition, we received an oil by Lars Thorsen titled *Calm & Peace*, which was a gift from the estate of Betsey C. Halsey.

The exhibition *Robert Brackman: Thinking in Color* gave us an opportunity to showcase our permanent collection and share paintings from sister institutions and private collections. The publishing of *Robert Brackman Remembered* by Lois Constantine served as a reference for the exhibition, while allowing rich programming through Lois's lectures on Brackman.

The Museum's 15 Water Street Gallery featured contemporary exhibitions and also launched our new lecture series, *I Feel Voxish*. This monthly speaker series with salon discussion invites leaders in culture and ideas to present topics representing their passions.

As a result of this special programming and more, Mystic Museum of Art saw more than 8,000 visitors. In addition, 22,600 people were engaged through exhibits, events, or educational programs. Over 6,000 students were reached through our classes, outreach in school programs, and field trips.

Our dedicated Mystic Museum of Art staff and Museum volunteers have been hard at work to advance the Museum, as is evident by so much activity and engagement. Their contributions cannot be overstated. All those who have experienced the Museum in some way, we know have left having been touched and inspired.

We thank each and every one of you for staying so invested in the Mystic Museum of Art. The Museum would not be where it is without the dedicated support of all of you. Thank you for helping the Museum to continue and to grow in its second century of serving as a cultural focal point of the Mystic community.

With warm appreciation,

**Mary Anne Stets**

*Chairperson, Board of Directors*

**David Madacsi**

*President, Board of Directors*



## EXHIBITIONS & COLLECTIONS

While Mystic Museum of Art's 2017 offerings included our traditional juried exhibition series and invitational shows, several carefully curated exhibitions of works selected from the permanent collection continued to underscore MMoA's role within the larger art historical context.

In a highlight of the year's exhibitions, the Museum organized and hosted *Robert Brackman: Thinking in Color*, featuring works from MMoA's permanent collection and important works on loan from private and museum collections.

Additional exhibitions featured works from the permanent collection. *Landscapes* charted the development of modern and contemporary art through the American tradition of landscape painting. *MMoA and the Golden Age of Illustration* highlighted the works of museum member artists Garrett Price, Harve Stein, and Herbert M. Stoops, who all lived in the Mystic area and played major roles at MMoA, then known as the Mystic Art Association. And, in response to the fact that works of women artists account for only three to five percent of major permanent art collections in the United States, the exhibition *Flipped* used MMoA's permanent collection to flip those statistics.

The *61st Regional Exhibition* featured submissions in a range of media and genres, demonstrating the strong artistic heritage and continuing vitality that pervades Mystic and the region, and was complemented by a solo exhibition in the Schuster Gallery of paintings by *60th Regional Exhibition* First Prize winner, Janvier Miller. Our 2017 juried theme show, *This Is Not Art*, celebrated the 100th anniversary of Marcel Duchamp's ground breaking work, *Fountain*, questioning what art is. The theme challenged our artists to create new works that pushed boundaries, and resulted in a highly-praised and memorable exhibition. The 2017 Photo Show was accompanied by textual pop artist John Boone's solo exhibition of word-based paintings and mixed-media. MMoA's 15 Water Street Gallery featured an exhibition of the two- and three-dimensional works of acclaimed artists Wendy Edwards and Jerry Mischak.

### Juried Exhibitions

*This Is Not Art*

*61st Regional Show*

*Photo Show 39*

### Non-Juried Exhibitions

*Young At Art*

*Elected Artist & Member Show*

*Holiday Fine Art & Gift Show*

### Invitational Exhibitions

*Fans and Vessels: The Works of Janvier Miller*

*John Boone: Pairs*

*Wendy Edwards/Jerry Mischak (15 Water Street)*

### Curated Exhibitions

*Selections from the Permanent Collection: Landscapes*

*MMoA and the Golden Age of Illustration*

*Flipped: The Women of the Permanent Collection*

*Robert Brackman: Thinking in Color*

### Jurors

Tanya Pohrt, Ph.D  
Project Curator of American Art  
Lyman Allyn Art Museum  
(*This Is Not Art*)

Jennifer Stettler Parsons, Ph.D  
Assistant Curator  
Florence Griswold Museum  
(*Young At Art*)

Nancy Whipple Grinnell  
Curator Emerita  
Newport Art Museum  
(*61st Regional Show*)

Joe Standart  
Artistic Director/Photographer  
(*Photo Show 39*)

## EDUCATION

Through the continuation of successful programming, along with the development of new offerings, MMoA reached its educational goals for 2017.

**M**ystic Museum of Art serves the local and surrounding communities by offering education opportunities to students of all ages. The success of MMoA's studio and outreach programs is due to the skill, inspiration, and experience of its talented faculty, who bring their knowledge, passion for teaching, and love of art to the Museum's student population. Through the continuation of successful programming, along with the development of new offerings, MMoA reached its educational goals for 2017.

MMoA saw a successful year in studio attendance with both our children and adult overall numbers being consistent with previous years. Offered classes continued to focus on fundamental concepts and traditional applications. Drawing and painting classes taught in the academic style remained popular. Our Monitored program offered a casual, open-space environment for students to hone their skills without formal instruction. Artists also enjoyed gathering in our studios to work and socialize during our Open Studio time.

Camp season continued to be a popular attraction for local and visiting children ages 3½ to 15. MMoA offered both full- and half-day Junior Studio Camps which gave children a broad art experience with different mediums and processes. Specialty Camps offered children a camp experience in a specific genre such as science or fashion illustration.

Public programs allowed students, and community members who don't typically utilize our studio classes, to come and explore their creative spirit. Artini Hour remained a popular, fun, social option for artists and non-artists alike. Open House and Family Night brought in community members who were new to the area or who had not yet participated in the Museum. MMoA launched *I Feel Voxish*, a forward-looking speaker series focused on contemporary issues in music, literature, visual arts, culture, and design, with the goals of both educating and appealing to those of a younger demographic who tend to visit cultural institutions for events, as opposed to exhibitions.



MMoA continued to offer both onsite and offsite educational opportunities for schools and other civic organizations. With schools seeing a drop in funding to cover costs associated with art education, MMoA strived to fill that gap. Our traveling, Pop Up program brought art classes into local schools. Additionally, programming was designed and implemented for the YMCA, town libraries, and Girl Scouts of Connecticut. MMoA brought art clubs to local magnet schools, giving students art instruction once a week in their classrooms.

Field trips served community schools with an onsite experience for grades K-12 by offering students and teachers the opportunity to tour our galleries, engage in thoughtful discussion, and create hands-on art. In all, twelve schools were served by MMoA Outreach. Preliminary meetings were held with Carl C. Cutler Middle School as it began the process of transitioning into an arts and humanities magnet school. Cutler has asked MMoA to support their efforts in bringing additional art programming into the school.

In 2017, school groups were subsidized by \$21,025 in grant funding. Donors included Community Foundation of Eastern Connecticut, Frank Loomis Palmer Foundation, Anderson-Pafford Foundation, Mystic Rotary, and Dime Bank Foundation.

## TREASURER'S REPORT

The year 2017  
was one of  
overall financial  
stability.

Once again, the Mystic Museum of Art has been the beneficiary of generous support from our artists, members, donors and volunteers. The year 2017 was one of overall financial stability. Revenue from the annual gala and parking lot increased by \$89,000 and \$68,000, respectively. This helped to offset declines in other areas, including annual appeal and gallery rentals. Overall income rose \$86,000 over 2016. Expenses rose, as well, with an increase of \$84,000 over 2016. This resulted from a myriad of generally small increases spread across various categories. Expenses for the annual gala and parking also increased by amounts (\$36,000 and \$37,000) far smaller than the resulting revenue increases. MMoA's investment account had a balance of \$851,857 on December 31, nearly \$85,000 higher than yearend 2016.

Respectfully submitted,

**Michele Kirk**  
*Treasurer*

# STATEMENT OF FINANCIAL POSITION

FOR THE YEAR ENDED DECEMBER 31, 2017, WITH COMPARATIVE TOTALS FROM 2016

## ASSETS

CURRENT ASSETS	2017	2016
Cash and cash equivalents	\$203,909	\$203,108
Pledges receivable	2,618	2,321
Prepaid expenses	14,633	11,007
Art inventory and sculptures	36,895	36,570
<b>TOTAL CURRENT ASSETS</b>	<b>258,055</b>	<b>253,006</b>
<b>PROPERTY AND EQUIPMENT</b>		
Land	188,846	188,846
Building and improvements	2,979,584	2,979,584
Furniture and equipment	115,284	115,284
	3,283,714	3,283,714
Less: accumulated depreciation	(903,527)	(821,006)
<b>NET PROPERTY AND EQUIPMENT</b>	<b>2,380,187</b>	<b>2,462,708</b>
<b>OTHER ASSETS</b>		
Beneficial interest in assets held by Community Foundation	34,040	32,236
Permanent art collection	533,340	510,541
Investments	851,857	766,649
<b>TOTAL OTHER ASSETS</b>	<b>1,419,237</b>	<b>1,309,426</b>
<b>TOTAL ASSETS</b>	<b>\$4,057,479</b>	<b>\$4,025,140</b>

## LIABILITIES AND NET ASSETS

<b>CURRENT LIABILITIES</b>		
Note payable - current portion	\$38,830	\$47,054
Accounts payable	126,363	90,284
Security deposits	17,377	16,877
Accrued wages	1,708	5,315
<b>TOTAL CURRENT LIABILITIES</b>	<b>184,278</b>	<b>159,530</b>
<b>LONG TERM LIABILITIES</b>		
Note payable (net of current portion)	918,012	955,305
<b>TOTAL LIABILITIES</b>	<b>1,102,290</b>	<b>1,114,835</b>
<b>NET ASSETS</b>		
Unrestricted	2,039,812	2,005,659
Temporarily restricted	295,430	284,699
Permanently restricted	619,947	619,947
<b>TOTAL NET ASSETS</b>	<b>2,955,189</b>	<b>2,910,305</b>
<b>TOTAL LIABILITIES AND NET ASSETS</b>	<b>\$4,057,479</b>	<b>\$4,025,140</b>

DOHERTY, BEALS & BANKS, P.C.

DOHERTY, BEALS & BANKS, P.C.

# STATEMENT OF ACTIVITIES

FOR THE YEAR ENDED DECEMBER 31, 2017, WITH COMPARATIVE TOTALS FROM 2016

SUPPORT AND REVENUE	Unrestricted	Restricted	Restricted	2017	2016
Rental and other operating income	\$276,239	\$ -	\$ -	\$276,239	\$287,469
Contributions and grants	62,026	20,033	-	82,059	83,498
Parking revenue	372,506	-	-	372,506	303,849
Education program tuition and fees	100,321	-	-	100,321	103,305
Membership dues	33,232	-	-	33,232	41,595
Annual appeal	24,304	-	-	24,304	26,097
Fund-raising	133,737	-	-	133,737	47,223
Exhibition income	64,730	-	-	64,730	84,787
Investment income	15,681	-	-	15,681	24,484
Unrealized gains (losses) on investments	59,599	-	-	59,599	32,745
Realized gains (losses) on investments	41,687	-	-	41,687	(8,099)
Net assets released from program restrictions	9,302	(9302)	-	-	-
<b>TOTAL SUPPORT AND REVENUE</b>	<b>1,193,364</b>	<b>10,731</b>	<b>-</b>	<b>1,204,095</b>	<b>1,026,953</b>
<b>EXPENSES</b>					
Salaries	479,889	-	-	479,899	466,983
Bad debt expense	1,525	-	-	1,525	-
Payroll taxes	36,810	-	-	36,810	35,706
Employee benefits	2,194	-	-	2,194	1,547
Instructors	39,001	-	-	39,001	44,368
Professional fees	19,653	-	-	19,653	16,685
Repairs and maintenance	71,994	-	-	71,994	60,743
Office supplies	34,065	-	-	34,065	29,765
Postage	1,861	-	-	1,861	2,116
Utilities	37,619	-	-	37,619	32,870
Telephone	4,047	-	-	4,047	4,010
Property management	83,232	-	-	83,232	46,855
Property and local taxes	28,897	-	-	28,897	26,795
Insurance	18,571	-	-	18,571	18,419
Exhibition costs	55,040	-	-	55,040	64,867
Bank and payroll fees	31,112	-	-	31,112	34,778
Advertising	13,320	-	-	13,320	18,059
Parking lot automation expenses	344	-	-	344	-
Miscellaneous	3,888	-	-	3,888	5,944
Event expense	58,521	-	-	58,521	24,627
Interest expense	45,627	-	-	45,627	43,610
Investment fees	7,179	-	-	7,179	6,569
Transportation	2,301	-	-	2,301	3,897
Depreciation expense	82,521	-	-	82,521	91,641
<b>TOTAL EXPENSES</b>	<b>1,159,211</b>	<b>-</b>	<b>-</b>	<b>1,159,211</b>	<b>1,080,854</b>
<b>CHANGE IN NET ASSETS</b>	<b>34,153</b>	<b>10,731</b>	<b>-</b>	<b>44,884</b>	<b>(53,901)</b>
<b>NET ASSETS - BEGINNING</b>	<b>2,005,659</b>	<b>284,699</b>	<b>619,947</b>	<b>2,910,305</b>	<b>2,964,206</b>
<b>NET ASSETS - ENDING</b>	<b>\$2,039,812</b>	<b>\$295,430</b>	<b>\$619,947</b>	<b>\$2,955,189</b>	<b>\$2,910,305</b>

DOHERTY, BEALS & BANKS, P.C.

# STATEMENT OF CASH FLOWS

FOR THE YEAR ENDED DECEMBER 31, 2017, WITH COMPARATIVE TOTALS FROM 2016

<b>CASH FLOWS FROM OPERATING ACTIVITIES</b>	<b>2017</b>	<b>2016</b>
Change in net assets	\$44,884	\$(53,901)
Adjustments to reconcile change in net assets to net cash provided (used) by operating activities:		
Depreciation	82,251	91,641
Realized (gains) losses on investments	(41,687)	8,099
Unrealized (gains) losses on investments	(59,599)	(32,745)
(Increase) decrease in:		
Pledge receivable	(297)	4,632
Prepaid expenses	(3,626)	(3,062)
Art inventory and sculptures	(325)	1,088
Increase (decrease) in:		
Accounts payable	36,079	15,733
Deferred revenue	-	(18,500)
Security deposits	500	(2,052)
Accrued wages	(3,607)	1,183
<b>NET CASH PROVIDED (USED) BY OPERATING ACTIVITIES</b>	<b>54,843</b>	<b>12,116</b>
<b>CASH FLOWS FROM INVESTING ACTIVITIES</b>		
Purchase and improvements to building	-	(14,550)
Sale of investments	690,759	644,545
Purchase of investments	(699,284)	(640,049)
<b>NET CASH PROVIDED (USED) BY INVESTING ACTIVITIES</b>	<b>(8,525)</b>	<b>(10,054)</b>
<b>CASH FLOWS FROM FINANCING ACTIVITIES</b>		
Payments on note payable	(45,517)	(64,962)
<b>NET CASH PROVIDED (USED) BY FINANCING ACTIVITIES</b>	<b>(45,517)</b>	<b>(64,962)</b>
<b>CHANGE IN CASH AND CASH EQUIVALENTS</b>	<b>801</b>	<b>(62,900)</b>
<b>CASH AND CASH EQUIVALENTS - BEGINNING</b>	<b>203,108</b>	<b>266,008</b>
<b>CASH AND CASH EQUIVALENTS - ENDING</b>	<b>\$203,909</b>	<b>\$203,108</b>
<b>SUPPLEMENTAL DISCLOSURES OF NONCASH INVESTING AND FINANCING ACTIVITIES</b>		
Cash paid for interest		\$45,627

DOHERTY, BEALS & BANKS, P.C.



Janvee

## SUPPORTING ORGANIZATIONS & INDIVIDUALS

The programs and exhibitions at Mystic Museum of Art are sustained by hundreds of generous sponsors, grantors, members, and donors whose belief in the power of the arts help to create a stronger and healthier community. Members of the Charles H. Davis Society have additionally arranged to support the Mystic Museum of Art in perpetuity through their estate planning.

### **Charles Davis Society**

Vera Acker +  
Judith Ackerman  
Mildred H. Burns +  
Harvey Fuller  
Gloria Gavert +  
Graham Gavert  
Anthony P. Halsey+  
Gretchen Higgins  
June Hunt+  
Alison C. Ives  
Katherine Tod Johnstone +  
Wil Langdon  
Sarah Stifler Lucas  
Norman C. Smith +  
Maturin F. Waldo  
Paul Lowell White +  
(+ Deceased)

### **Grants**

Anderson-Paffard Foundation, Inc.  
Anonymous  
Chelsea Groton Bank  
Chester Kitchings Family Foundation  
Community Foundation  
of Southeastern Connecticut  
Connecticut Humanities Council  
Department of Economic  
and Community Development  
Dime Bank Foundation, Inc.  
Frank Loomis Palmer Fund

Groton Education Foundation  
Katherine Forest Crafts Foundation  
Ledge Light Health District  
Mystic Garden Club  
Mystic Rotary  
Pfizer Global Research and Development  
The Community Foundation  
of Eastern Connecticut  
The University of Connecticut Foundation, Inc.

### **Gifts in Kind**

Advanced Improvements, LLC  
Aquarion Water Company of CT  
Bronco Wines  
CheapBeats Drum  
Chelsea Groton Bank  
Chester Kitchings Family Foundation  
CMB Creative Group, LLC  
Coastal Funding Corporation  
Dime Bank Foundation, Inc.  
Dogwatch Café  
Dynamic Alliance  
Factory Square, LLC  
Gowrie Group  
Gwenmor Marine Contracting, Inc.  
JTK Management  
Leckerling Ladwig & Leamon, LLC  
Market Realty, LLC  
Masonicare at Mystic  
Mighty Swell Beverages  
MW Coastal Goods

Mystic Garden Club  
Mystic Knotwork  
Mystic Seaport Museum  
O'Brien Stuart Epinger  
and Collier, LLC  
Pfizer Global Research  
and Development  
Real McCoy Rum  
Steamboat Wharf  
and Steamboat Inn  
StoneRidge Retirement  
Community  
The Day  
Waller, Smith & Palmer, P.C.  
Waterford Group  
Charitable Foundation

**Matching Gifts**

Citizens Bank  
Pfizer

**Donors**

**Gifts of \$5,000 +**

Charles and Irene Hamm  
Chester Kitchings Family  
Foundation

**\$2,500 - \$4,999**

Albert and Victoria Christian  
Renate and Peter Gleysteen  
Andrew M. Halsey  
Cynthia and Robert Martin  
Michelle Marra

**\$1,000 - \$2,499**

Todd Brady  
James C. Burbank

Bruce Cummings  
William D. Forster  
Celia B. Gallup  
H. Wes Maxwell  
and Mary Anne Stets  
Alexandra McCagg  
Dennis and Deborah Murphy  
Ann O'Brien  
Michael Rauh  
John Reizian  
Patricia Savides  
Karin and Peter Stuart  
Waller and Jeff Walker  
Stephen C. White  
Peter Kepple  
and Karin Forde Whittemore

**\$500 - \$999**

Katherine Burdge  
Lynn Cabana  
Melinda E. Carlisle  
Jorge Funes  
Janvier and Gustaf Miller  
Barbara B. Nelson  
Alexa and Dan Pearson  
John and Thalia Pryor  
James and Christine Robertson  
Hillary Seltzer  
Diane and Ernie Spira  
Mark Turner  
Darcie Watson

**\$250 - \$499**

Harriet Moore Ballard  
N. Alex and Mark Bancroft  
Melissa Barnes  
Gwendolyn Basilica  
Elaine Bogue

John Boone  
Laura and Ken Brown  
Lisa Brownwell  
Karin and Russ Burgess  
Jill Abele and William Butcher  
Martha and Charles Clapp  
Carol and Paul Connor  
Eileen and Neil Danaher  
Donald Distanto  
Susan Donoghue  
Carole Erdman  
John Filhouber  
Paul and Gail Filipetti  
Mary Fox  
Mark and Barbara Ginsberg  
Erica Lindberg Gourd  
Eva and Michael Guidera  
Matthew Gutmann  
Wendy Halsey  
Stacey Haskell  
Tom Hetherington  
Charlie Hooper  
Jim and K.T. Hunter  
Nancy Hutson  
Frederick Johnson  
Michele Kirk  
Mari Kodama  
Nancy and Martin Lyons  
Cathy and Frank Marco  
John McGee  
Drs. John and Marcia McGowan  
The McGugan Family  
Janis Mink  
Joan O'Neill  
Margaret Palmer  
David Preka  
Christine Robertson  
Joan B. Ross



Nicholas and Judy Salerno  
Joseph and Noreen Selinger  
Clare Sheridan  
Mr. and Mrs. Robert Simmons  
Grant Smith  
Don Smyth  
Robert Spang  
David Stetson  
Andrew Storm  
Ann Szymanski  
Dorrie Thomas  
Barbara Timken  
Ethan Tower  
Suzanne Tyler  
Maryse Wicker  
Eileen Zelken  
Frederick and Patricia Ziegler  
Pete Zuraw

**\$100 - \$249**

Cynthia and Louis Allyn  
Susan and David Atwater  
Mary Boland  
Helen Babcock  
and Thomas Buttacavoli  
Judy Cantwell  
Judi and Celeste Caracausa  
Linda Cernak  
Carole and William Clark  
Julia Constantine  
Lois H. Constantine  
Mary Jo Courtney  
Timothy Cummings  
Bruce and Denette Dasinger  
Denette Dasinger  
Frank and Jackwyn Durrschmidt  
Isabelle and James English, Jr.  
Ron and Marlene Estabrooks

Patricia S. Fritzsche  
Susan and Jim Funk  
Hadley Gilman  
Judith and Barrie Hesp  
Muriel Hinkle  
Ardis S. and Richard C. Holliday  
Marc and Bonnie Jaffee  
Susan Johnson  
Diane Kane-Fournier  
Deborah Kotchen  
Henie Kurzman and Peter Lacy  
Linda and John Lancz  
Joanne Lukaszewicz  
and John Leary  
Elaine and Dan Lettiere  
Hope and Robert Leuba  
David Madacsi  
Stearns and Prudy Martin  
Nuala McLaughlin  
Regina Moller  
Virginia P.  
and Robert Montgomery  
Kevin and Valerie North  
Dennis and Deborah O'Brien  
Michele Olender  
Ivan and Naomi Otterness  
Cynthia Palmer  
Mary Katherine Porter  
Ann and Paul Rath  
Maryann and John Read  
R. Douglass Rice  
and Cynthia Elliott  
Janet and Ronald Romanowski  
Elisse Rosen  
Ann Gray and James Royle  
Ann Scavone  
Shirley Sebastian  
Denise Shafner

Anna and George Shaw  
Ellen Smith  
Donna and William Stamm  
Karen Steever  
Peggy and Richard Traskos  
Daniel and Elizabeth van Winkle  
Maryse Wicker



## MMOA COMMITTEES

### **Annual Fundraiser**

Cynthia Martin, *Chair*  
Alex Bancroft  
Melissa Barnes  
Deborah Dempsey  
Kierstan Field  
Andrea Frickman  
Renate Gleysteen  
Andy Halsey  
Jim Hunter  
George G. King  
Mari Kodama  
Amy Munoz  
Anne Page  
Dan Pearson  
Waller Walker  
Karin Forde Whittemore

### **Advancement**

Andy Halsey  
Cynthia Martin  
Anne Page

### **Permanent Collection**

Julia Constantine  
Lois H. Constantine  
Erika Neenan  
Barbara Nelson

### **Finance**

Alex Bancroft  
Todd Brady  
Judith Flora  
George G. King  
Michele Kirk  
David Madacsi  
Mary Anne Stets

### **Education**

Gwen Basilica  
Michele Kirk  
Dan Pearson  
Dawn Salerno

### **Strategic Planning**

Alex Bancroft  
Gwen Basilica  
Andy Halsey  
George G. King  
Michele Kirk  
Patricia Kitchings  
David Madacsi  
Cindy Martin  
Dawn Salerno  
Mary Anne Stets

### **Building and Grounds**

Mark Bancroft  
Todd Brady  
Carole Erdman  
Wes Maxwell  
Rodolfo Reyes  
Tony Saccone

### **Exhibitions**

Gwen Basilica  
Rita Dawley  
Gretchen Higgins  
Allison Ives  
George G. King  
David Madacsi  
Erika Neenan  
Dawn Salerno  
Dennis Serrine  
Karin Whittemore

## ELECTED ARTIST MEMBERSHIP

Elected Artists provide their support, kinship and inspired artwork to Mystic Museum of Art. To become an Elected Artist, the artist must be accepted into four juried exhibitions within a twenty-four month period. Congratulations to our Elected Artist members below for this noteworthy accomplishment.

(\* New Elected Artist)

Lisa Lyman Adams	Carol Sward Comeau	Alison C. Ives
Bob Adams	Geoffrey G. Constantine	Roger Carl Johanson
Carol A. Adams	Sylvia Cooke	Jacqueline Jones
Suzanne Dickson Albert	Anne Winthrop Cordin	Sean Kane
Lynn Anderson	Jean Dalton	S. Chandler Kissell
Linda DiFrenna Ash	Bruce Dasinger	Judith Laffey
Del-Bourree Bach	Rita Dawley	Daniel Lake
Joann A. Ballinger	*Anthony P. DeAngelis II	Layne
Teri Banas	Joan Dill	Marilyn McShane Levine
Jillian Barber	Elin D. Dolle	Charles P. Liguori
Gwendolyn Basilica	Janice Silvers Drake	Gigi Horr Liverant
Karin O. Bastidas	Carol Dunn	Robert Loebell
Roger Beers	Linda Edgar-Yost	David Madacsi
Gilbert Boro	Margaret Emond	Taylor Mahan
Ms.Kay R. Brigante	*Carole Erdman	John W. Malenda
Diane Brown	Gilbert Fahey	Catherine Mansell
Alan Brush	John Fix	Marco Marinelli
M.J. Brush	Judy Flora	Craig Masten
Jane Buffum	Gloria Fowler	Bruce A. McDermott
Ben Buglio	Jim Friedlander	Maggie McDonough
Susan Burgess	Duane V. Gamble	Gustaf Miller
*Deborah Burklund	Ms.Mary Gazda	Janvier Miller
Pat Cahalan	Kam Ghaffari	Eileen McCarney Muldoon
Judy Cantwell	William G. Gilroy	Paul M. Murray
John Cardin	*Betty Harrington	Richard P. Nazzaro
Bob Carignan	Gretchen Higgins	Karen Neff
Joanne Case	Paul Hitchen	Nancy Nielsen
Jean Cassidy	Ardis S. Holliday	Frank T. Novack
Cheryl Graves Chambers	Eric Hovermale	Fran Oat
Carole Clark	Sunil Howlader	John S. Oat

\*Nancy Oates  
Marian O'Connell  
Susan Parish  
Mark Patnode  
MD Pierson  
\*Catherine Puccio  
Jerry Reed  
Maryann Read  
John Read  
Lori Rembetski  
\*R. Douglass Rice  
Carl S. Richards  
Jean D. Ridall  
Carol Ridgway  
Earl Roberts  
Muriel Roberts  
Diana Rogers  
Olivia Ann Rolston  
\*Gina Rubin  
Lenny Rumppler  
Chip Rutan  
Maggi Ryan  
Judy Salerno  
Nicholas Salerno  
Leonard Sawyer  
\*Leonard M. Sawyer, II  
Susan Pfeifer Scala  
Robert Scutt  
Cheryl Seaver  
Lois Segman  
Serena Bates  
Susan Shaw  
Michele Sinkez  
Catherine Whall Smith  
Joseph Soares  
Suzanne G. Starr  
Kenneth Steinkamp  
Mary Anne Stets  
Beth Sullivan  
Tony Sullivan  
Linda Talerico  
Susan C. Van Winkle  
Melanie G. Watrous  
Rosemary Webber  
\*Cathy Weiss  
Karen Willis  
Cindy Horovitz Wilson  
Garnet Wrigley  
Grace Zazzaro

# BOARD OF DIRECTORS AND STAFF

Current Board and Staff (June 20, 2018)

## Board of Directors

### Officers

Mary Anne Stets

Chairperson

David Madacsi

President

Andrew Halsey

Vice President

Michelle Kirk

Treasurer

Cynthia Martin

Secretary

### Directors

Gwen Basilica

Todd Brady

Patricia Kitchings

Mari Kodama

Xanda McCagg

Joe Selinger

## Staff

Judy Flora

Acting Executive Director  
and Director of Finance

Bill Furguson

Director of External Affairs

Melissa Baker

Corporate Relations  
and Events Manger

MaryAddison

Education Coordinator

Rodolfo Reyes

Facilities Manager

James Kaczman

Graphic Designer

Amelia Onorato

Interim Exhibitions Coordinator

Charlene Johnston

Administrative Assistant

Rita Dawley

Visitor Services Associate

Betty Pacelle

Visitor Services Associate

Publication Date: June 20, 2018

© 2018 by Mystic Museum of Art

Mystic Museum of Art  
9 Water Street  
Mystic, Connecticut 06355  
860.536.7601  
Info@MysticMuseumofArt.org  
MysticMuseumofArt.org

### Credits

Front, back, and inside cover:  
Charles H. Davis, *The Clearing*  
(details), 1915. Oil on canvas,  
42 x 34 in. Exhibited in Charles H.  
Davis Gallery, Mystic Museum of Art,  
September 28 – November 11, 2017

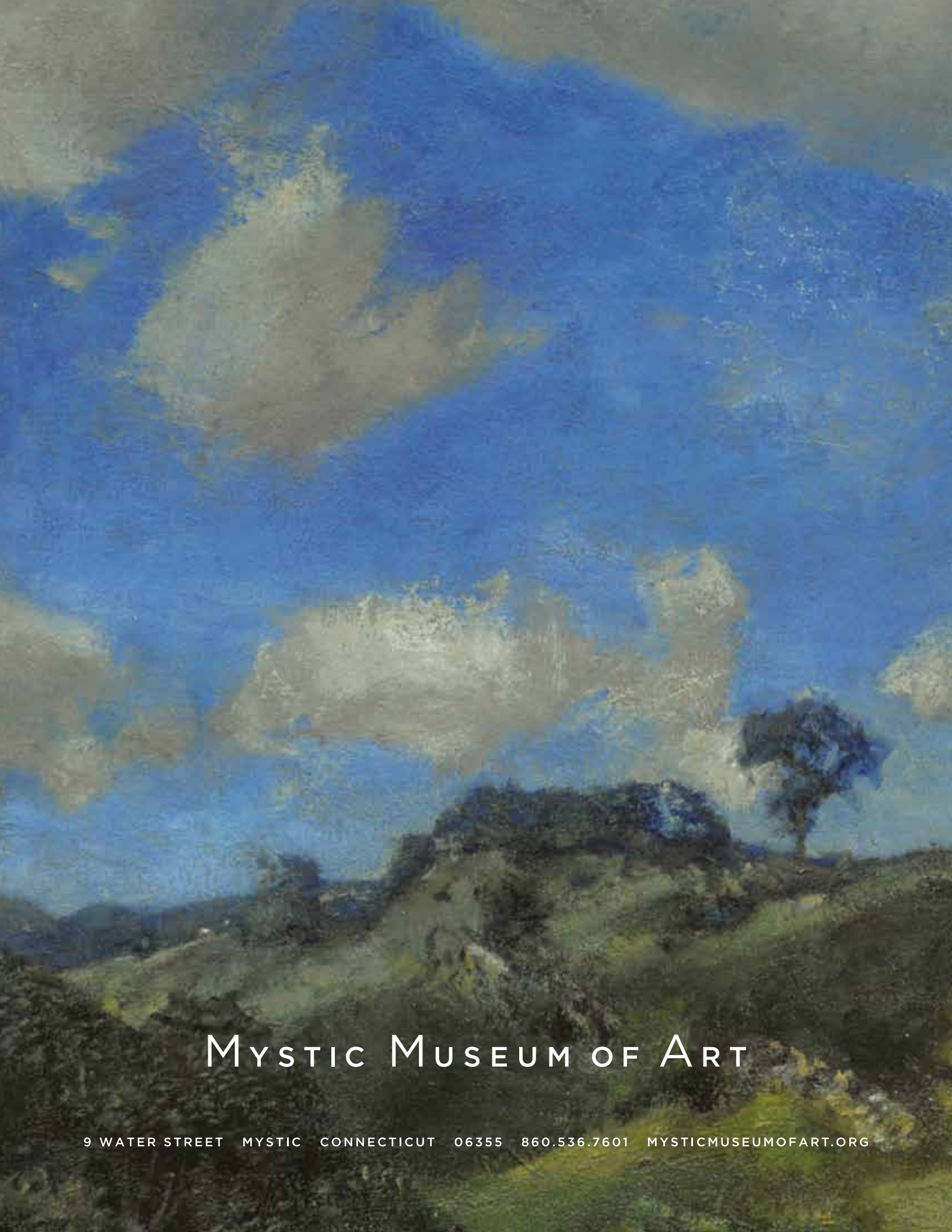
Page 4: Robert Brackman, *Charles  
A. Lindbergh*, 1938. Oil on canvas,  
36½ x 30½ in. Courtesy of Mead Art  
Museum, Amherst College, Amherst,  
Massachusetts. Gift of Anne Morrow  
Lindbergh. Exhibited in *Robert  
Brackman: Thinking in Color*,  
Mystic Museum of Art,  
June 16 – September 23, 2017

Page 12: Janvier Miller, *China Vase*.  
Oil on canvas, 50 x 44 in. Exhibited  
in *Fans and Vessels: The Works of  
Janvier Miller*, Mystic Museum of Art,  
August 4 – September 16, 2017

Page 16: Wendy Edwards, *UPPER*,  
2015. Oil on canvas, 78 x 70 in.  
Exhibited in *Wendy Edwards / Jerry  
Mischack*, Mystic Museum of Art 15  
Water Street Gallery, September 28 –  
December 17, 2017

The background is an abstract, textured composition of various shades of blue and grey. The colors are layered and blended, creating a sense of depth and movement. The overall effect is reminiscent of a watercolor or a soft-focus photograph of a natural scene.

The mission of Mystic Museum  
of Art is to inspire creativity and  
critical dialogue by engaging  
the regional community in the  
understanding, appreciation and  
practice of visual art.



# MYSTIC MUSEUM OF ART

9 WATER STREET MYSTIC CONNECTICUT 06355 860.536.7601 MYSTICMUSEUMOFART.ORG